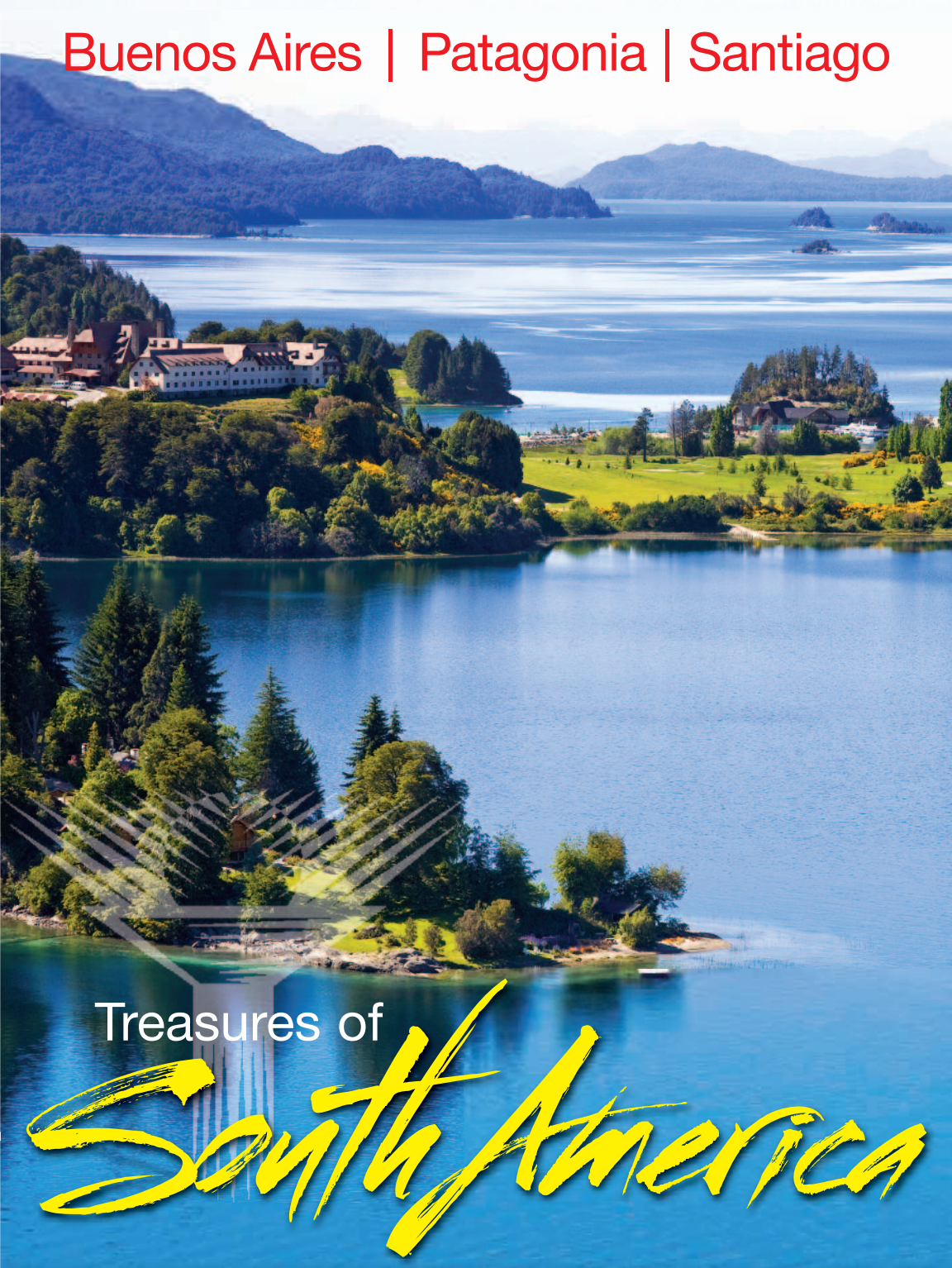


Buenos Aires | Patagonia | Santiago



Treasures of

*South America*

**SPONSORED BY**



**JOHNS HOPKINS**  
UNIVERSITY

**MARCH 11-23, 2016**





*La Recoleta Cemetery*



*Tango dancers*



*La Boca*



*Local woman, Andes*



*Petrohue Falls and Osorno Volcano*

**S**tudded with breathtaking natural wonders and intriguing cities, South America encompasses a staggering diversity of terrain that remains unmatched elsewhere in the world. From the historical and cultural treasures of Argentina's and Chile's scintillating capitals to the wild beauty of Patagonia's Lake District, it is a land that for centuries has inspired explorers and writers alike and where spire-tipped mountain crests cradle turquoise waters and scrubby steppe and lush, temperate forests teem with wildlife. The South American passion for life thrives here, waiting to enfold you within its warm cultural embrace.



*San Carlos de Bariloche*



## Dear Johns Hopkins Alumni and Friends,

Join us for a South American adventure that strikes a perfect balance between the cultured capital cities of Argentina and Chile, and the incredible alpine landscapes and windswept plains of northern Patagonia.

Our carefully planned itinerary introduces you to each country's heritage and unique traditions. You'll be immersed in the splendor of dense forests, snow-capped volcanoes and jewel-tone lakes in Nahuel Huapi National Park when we stay at the world-renowned Llao Llao Hotel & Resort. Spectacular Patagonia vistas surround you as we retrace the historic route of Ricardo Roth from Argentina to Chile.

An experienced Travel Director takes care of every detail during your journey, and expert guides lead you on fascinating excursions, providing in-depth looks at the culture and history of this region. In addition, we're offering an array of optional excursions and an optional extension to Iguazú Falls, plus plenty of opportunities for independent exploration, so you can make your trip as adventurous or relaxing as you wish.

Space on this exclusive program is limited, so we encourage you to make your reservations today.

Sincerely,

*Marguerite I. Jones*

Marguerite I. Jones, A&S '74, Bus '88  
Travel Program Director  
Office of Alumni Relations  
The Johns Hopkins University

"This city that I  
believed was my past,  
is my future, my  
present; the years I  
have spent in Europe  
are an illusion, I  
always was (and will  
be) in Buenos Aires."

Jorge Luis Borges,  
Argentine poet,  
1899-1986,  
"Arrabal," from Fervor  
de Buenos Aires, 1921

"Love beauty; it is  
the shadow of God  
on the universe."

Gabriela Mistral,  
Chilean poet and  
Nobel Prize in Literature  
winner, 1889-1957

"He who does not  
know the Chilean  
forests does not  
know the planet."

Pablo Neruda,  
Chilean writer and  
Nobel Prize in Literature  
winner, 1904-1973,  
*I Confess that  
I Have Lived,*  
1974

**AHI: 800-323-7373**

**[www.alumni.jhu.edu](http://www.alumni.jhu.edu)**



Peulla



Buenos Aires

Your introduction to South America carries you from the eclectic barrios of Buenos Aires to San Carlos de Bariloche and the unrivaled beauty of Nahuel Huapi National Park. Cross the Andean Lakes through mystical Patagonian landscapes to arrive in Chile. And discover the life of a Chilean huaso, cowboy, in Puerto Varas before concluding your adventure in sophisticated Santiago.

## | DAY-BY-DAY ITINERARY |

### DAY ONE

Depart your gateway city for Buenos Aires, Argentina.†

†*Provided for AHI FlexAir participants.*

### DAY TWO

#### **BUENOS AIRES, ARGENTINA**

Upon arrival, transfer† and check in to The Brick Hotel Buenos Aires.

**Excursion: *La Recoleta*.** Explore La Recoleta Cemetery, necropolis for Argentine luminaries, including controversial Evita Perón. Head north to gleaming 18th-century Basilica Nuestra Señora del Pilar.

**Educational Focus: *The History and Culture of Argentina and Chile*.** Listen to the epic story of Argentina's and Chile's history and understand the tsunami of immigration that shaped the cultural structure and ultimate independence of these unique countries.

This evening, join fellow travelers for a Welcome Reception.

## | PROGRAM HIGHLIGHTS |

- ▶ Admire the landscape, wildlife and culture of **Argentina** and **Chile**.
- ▶ Explore the sights and sounds of **Buenos Aires**, Argentina's lively capital.
- ▶ Immerse yourself in the stunning scenery of Patagonia and the Andes Mountains as you **traverse the Andean Lakes**.
- ▶ Discover the life of cowboys at a Chilean ranch.
- ▶ Experience the cosmopolitan ambience of **Santiago**, Chile's historic capital.

### DAY THREE

B I L

#### **BUENOS AIRES**

##### **Excursion: *Buenos Aires City Tour*.**

Wander palm-strewn Plazo de Mayo, followed by stops at eye-catching Casa Rosada, Metropolitan Cathedral and elaborate Colón Theater. See the Colón Theater, Avenida de Mayo and San Telmo before witnessing the architecture of Palermo.

**Local Flavor:** Savor regional cuisine during lunch at a local restaurant.

**Independent Exploration:** Enjoy free time to explore Buenos Aires' diverse barrios.

**Optional Excursion: *Tango Tribute*.** Dancers, singers and an orchestra vividly





showcase the sensuality and choreography of this dazzling art form.

DAY FOUR B

BUENOS AIRES

**Independent Exploration:** Enjoy free time during your final day in this energetic city.

**Optional Excursion: Tigre.** Admire the unhurried rhythm of waterfront life as you sail past unique landscapes of the Paraná Delta, once home to pirates and smugglers.

DAY FIVE B I D

BUENOS AIRES | SAN CARLOS DE BARILOCHE

After breakfast, transfer to Buenos Aires Airport for your flight to San Carlos de Bariloche. Upon arrival, check in to Llao Llao Hotel & Resort, a masterpiece of alpine architecture ensconced among snow-dusted Andean peaks and crystal lakes in Nahuel Huapi National Park.

DAY SIX B I L

SAN CARLOS DE BARILOCHE

**Excursion: Lake Nahuel Huapi.** Drive along the sapphire shores of this glacial finger lake, then ride to the top of Mount Campanario for panoramas of Patagonian splendor.

**Local Flavor:** Dine on regional specialties at a Bariloche restaurant.

**Independent Exploration:** Enjoy leisure time and perhaps indulge in some authentic Bariloche chocolate.

DAY SEVEN B I D

SAN CARLOS DE BARILOCHE

**Educational Focus: Bariloche and World War II.** Learn about the mythical ODESSA network and Bariloche's role as a haven for Nazi war criminals.



**Independent Exploration:** Spend your day discovering Nahuel Huapi National Park's natural treasures.

DAY EIGHT B I L I D

SAN CARLOS DE BARILOCHE | PUERTO VARAS, CHILE

**Excursion: Crossing the Andean Lakes.**

Travel Patagonia's famed scenic route from Argentina to Chile through Patagonia on one of the most unique and picturesque travel experiences in the world.

**Local Flavor:** Enjoy lunch amid the raw beauty of Puella.

Arrive in Puerto Varas and check in to Hotel Patagónico.

DAY NINE B I L

PUERTO VARAS

**Excursion: Chilean Ranch Visit.** Witness the life of huasos, Chilean cowboys, at Fundo Olguita, a traditional working ranch. Then, watch skill competitions by resident huasos.

**Local Flavor:** Experience a traditional Chilean barbecue.

**Educational Focus: Chilean Lake**

**District.** Discuss the role climate change plays in the rapid recession and thinning of Patagonian icefields and glaciers.

DAY TEN B

PUERTO VARAS | PUERTO MONTT | SANTIAGO

After breakfast, transfer to Puerto Montt for your flight to Santiago. Upon arrival, visit the Chilean Museum of Pre-Columbian Art.

Later, check in to the InterContinental Santiago.

**Independent Exploration:** Enjoy free time to explore Santiago.

DAY ELEVEN B I D

SANTIAGO

**Excursion: Santiago.** Roam the historic Plaza de Armas. Admire the Metropolitan



Nahuel Huapi National Park

Cathedral and the pastel-pink Central Post Office. Witness the leafy Parque Forestal during a scenic drive and stop in bohemian Bellavista, known for its celebrated denizen, Pablo Neruda.

**Independent Exploration:** Enjoy leisure time.

Tonight, gather with fellow travelers for a Farewell Reception and Dinner at the hotel.

#### DAY TWELVE

B

#### SANTIAGO

**Independent Exploration:** Pick up last-minute mementos during free time on

your final day in Santiago.

Tonight, transfer to the Comodoro Arturo Merino Benítez International Airport for the return flight to your gateway city.<sup>+</sup>

#### DAY THIRTEEN

Arrive in your gateway city.<sup>+</sup>

**NOTE:** Itinerary sequence and/or scheduled events may change. Many excursions in this program involve an element of walking. Optional Excursions are available at an additional cost.

Included meals indicated each day as

B | L | D = Breakfast | Lunch | Dinner.



Enjoy this full-day crossing of the magnificent Andean Lakes

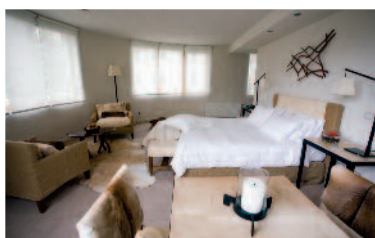
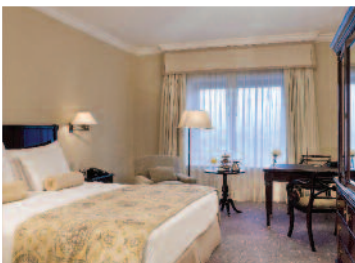
## Cruce de los Lagos

By land and by water, journey from San Carlos de Bariloche, Argentina, to Puerto Varas, Chile, over majestic Andean peaks and across pristine Patagonian lakes. This epic excursion follows the trail cut by the first adventurers to cross the Andes along this route in 1913. Travel in comfort while marveling at nature's spectacular display of breathtaking beauty.





## | ACCOMMODATIONS |



### THE BRICK HOTEL BUENOS AIRES

Located in the fashionable Recoleta neighborhood, just north of Buenos Aires' city center, The Brick Hotel is near historic sites and famous Avenida 9 de Julio, one of the widest avenues in the world. Dine on contemporary Argentine cuisine at Agraz restaurant and sip cocktails at English-style Cheers pub. There's 24-hour room service, and you can wind down after a full day with a workout in the fitness center, trip to the sauna or dip in the indoor heated pool. Each guest room features warm décor, a flat-screen TV, minibar and hair dryer. Complimentary Wi-Fi is available.

### HOTEL PATAGÓNICO PUERTO VARAS

Hotel Patagónico offers a warm and welcoming refuge, tucked away among the lakes and volcanoes of Chile's Lake District. With Osorno Volcano as your backdrop, relax with a sunset stroll through the hotel's 5-acre garden overlooking Lake Llanquihue. Enjoy a cocktail in Bar Kutral or out on the terrace. Handcrafted natural furnishings define each guest room. Complimentary Wi-Fi is available.



### LLAO LLAO HOTEL & RESORT SAN CARLOS DE BARILOCHE

Situated on 37 acres inside Nahuel Huapi National Park, Llao Llao Hotel & Resort incorporates the majesty of Argentine Patagonia with the warmth of its alpine architecture. Luminous views of snow-capped mountains, cypress forest and crystal lakes are everywhere you look. This mountain hotel features an 18-hole golf course, marina, beach and fitness center, as well as indoor and outdoor heated infinity pools. Enjoy a relaxing spa treatment before partaking in the classic Llao Llao Tea or dining in one of five restaurants. Take in the excellent view over a glass of wine chosen from the hotel's exclusive wine selection. Exquisitely decorated rooms overlook Moreno and Nahuel Huapi lakes and Cerro López mountain peak. Complimentary Wi-Fi is available.

### INTERCONTINENTAL SANTIAGO

The InterContinental Santiago is in the heart of Santiago's financial district, near La Moneda Palace and the exclusive shops of Avenue Alonso de Córdova. Savor Chilean and international dishes at any of the hotel's four restaurants. Stop in for Happy Hour at Benatino Bar and try the city's signature cocktail, the Pisco sour. The hotel boasts a heated indoor swimming pool. Complimentary Wi-Fi is available.





**Llao Llao Hotel & Resort**



**Iguazu Falls**

**FASCINATING  
OPPORTUNITY**

## IGUAZÚ FALLS OPTIONAL TWO-NIGHT PRE-TRIP EXTENSION

One of earth's most unforgettable sights, Iguazú Falls, a UNESCO World Heritage site, is a dazzling panorama of more than 270 thundering torrents. Before the main program, stay two nights at the Loí Suites Iguazú Hotel. Traverse the Lower Circuit through subtropical jungle rich in exotic wildlife and stand before the crashing silvery sheets produced by the site's most magnificent section, Devil's Throat. Then, navigate the Upper Circuit and witness mist-induced rainbows while viewing the falls from this new angle. Includes accommodations, a daily buffet breakfast, one lunch, concierge service, the services of an expert guide and transfers between airport/hotel\* and baggage handling.

**\$1,695 per person, double occupancy /  
\$2,190 single occupancy**

\* Provided for AHI FlexAir participants.

**Loí Suites Iguazú Hotel**





# Reserve your trip to South America today!

Send to: Treasures of South America  
The Johns Hopkins University  
c/o AHI Travel  
International Tower-Suite 600  
8550 W. Bryn Mawr Avenue  
Chicago, IL 60631

Trip #:8-22528W

Please contact AHI Travel at **800-323-7373** with questions regarding this tour. For questions regarding Johns Hopkins, please call **800-JHU-JHU1(548-5481)** or Email: **travel@jhu.edu**.

Full Legal Name (exactly as it appears on passport)

(1) \_\_\_\_\_  
Title First Middle Last Date of Birth

Email: \_\_\_\_\_

(2) \_\_\_\_\_  
Title First Middle Last Date of Birth

Email: \_\_\_\_\_

Street Address: \_\_\_\_\_

City: \_\_\_\_\_

State: \_\_\_\_\_ ZIP: \_\_\_\_\_

Home: (\_\_\_\_\_) Cell: (\_\_\_\_\_) \_\_\_\_\_

Sharing with \_\_\_\_\_. (Form sent separately.)

## Optional Two-Night Pre-Trip Extension in Iguazú Falls, Argentina

Please make \_\_\_\_\_ reservations for me (us) on the Iguazú Falls  
Optional Pre-Trip extension.

### I/we authorize you to make my/our reservations as follows: Land Program and AHI FlexAir

☐ I/we reserve the Land Program and request the AHI FlexAir to Buenos Aires,  
Argentina, with a return from Santiago, Chile, to depart from:

\_\_\_\_\_  
Departure City

- ☐ Please contact me regarding air options.  
☐ Please send me information on upgrading my flights.

### Land Program

☐ I/we will make my/our own air arrangements and transfers.

### Single Accommodations

- ☐ I prefer single accommodations at an additional \$1,495 (limited availability).  
☐ I request assistance in securing a roommate but will accept a single, if one is  
available at this time, and pay the single supplement. Should a roommate be  
found, I understand the supplement will no longer apply.

Reservations are subject to availability and processed on a first come, first served  
basis. Reservations to be paid in full by December 27, 2015 (75 days prior to  
departure). Reservations received after this date must be accompanied by pay-  
ment in full. Final payment may be made by personal check, MasterCard, Visa,  
Discover or Amex. Make checks payable to AHI International.

**Note:** A small portion of the cost of your trip supports the Johns Hopkins Alumni  
Travel Program.

Eligibility: At least one member of the traveling party is required to make a sus-  
taining financial contribution of \$50 or more to the Johns Hopkins Alumni  
Association within the fiscal year. Please visit alumni.jhu.edu/support.

☐ I understand the conditions stated in this brochure and submit my reservation  
as indicated.

Signature \_\_\_\_\_ Date \_\_\_\_\_

Enclosed is a deposit of \_\_\_\_\_ (\$600 per person) to reserve \_\_\_\_\_ place(s).

☐ Accept my check made payable to **AHI International**.

Charge my: ☐ MasterCard ☐ Visa ☐ Discover ☐ Amex Expires \_\_\_\_\_/\_\_\_\_\_

Card # \_\_\_\_\_

(Signature as it appears on credit card)

**Please note:** Any payment to AHI International constitutes your acceptance of the  
terms and conditions set out herein, including but not limited to the cancellation terms.

**ULTIMATE FLEXIBILITY**-The AHI Travel  
Passenger Protection Plan offers an **Any  
Reason Cancellation** feature. Don't worry!  
Travel happy!

**NOT INCLUDED**-Fees for passports and, if applicable,  
visas, entry/departure fees; personal gratuities; laundry  
and dry cleaning; excursions, wines, liquors, mineral  
waters and meals not mentioned in this brochure under  
included features; travel insurance; all items of a strictly  
personal nature.

**MOBILITY AND FITNESS TO TRAVEL**-The right is retained  
to decline to accept or to retain any person as a mem-  
ber of this trip who, in the opinion of AHI Travel is unfit  
for travel or whose physical or mental condition may  
constitute a danger to themselves or to others on the  
trip, subject only to the requirement that the portion of  
the total amount paid which corresponds to the unused  
services and accommodations be refunded. Passengers  
requiring special assistance, including without limitation  
those who permanently or periodically use a wheelchair,  
must be accompanied by someone who is fit and able to  
assist them, and who will be totally responsible for pro-  
viding all required assistance.

**AIR TRANSPORTATION**-The price of air transportation  
offered by AHI Travel is based on Advance Purchase  
Excursion fares. After tickets are issued, penalties up to  
100% of the ticket price may be levied. If connecting  
flights are requested, special promotional fares may be  
used, in which case penalties of as much as 100% may  
be assessed by the airlines if reservations are changed  
or canceled after ticketing. After departure, if the reser-  
vations are changed, you will be charged the higher, all  
year Economy class fare. **VARIATIONS TO THE GROUP  
ITINERARY MUST BE REQUESTED NO LATER THAN 60  
DAYS PRIOR TO DEPARTURE.** Passengers who choose  
to make their own airline reservations independently  
will be wholly responsible for any airline fees or pen-  
alties incurred as a result of program cancellation and/or  
change in travel dates, or airline schedule(s).

**BAGGAGE**-Baggage restrictions vary according to the air-  
line policy and the class of service flown. Details will be  
provided with your pre-departure information. Baggage  
allowances are subject to change by the carrier without  
notice. Excess baggage charges for additional or over-  
sized/overweight pieces are expensive and not included  
in your trip price; plan your wardrobe accordingly.  
Transport of baggage and personal effects is at the  
owner's risk throughout the travel program.

**AUTHORITY TO USE IMAGES AND AUDIO RECORDINGS**-On oc-  
casion, AHI Travel obtains, from its staff, or from trip participants,  
photographic or video images of passengers and trip activities. By  
participating in this travel program, you authorize AHI Travel, with-  
out providing compensation to you, or obtaining additional  
approvals from you, to include photographic and video recordings of  
you, as well as voice recordings included with any videos, in AHI  
Travel's sales, marketing, advertising, publicity and/or training  
activities.

**RESPONSIBILITY**-AHI Travel and the Sponsoring Association do not  
own or operate any entity which provides goods or services for this  
program, and act only as agents for the independent suppliers of  
trip conveyance, transport, accommodations or other services.  
All such persons or entities are independent contractors. As a  
result, AHI Travel and the Sponsoring Association are not liable for  
any negligence or willful act of any such person or entity or any  
third person. In addition and without limitation, AHI Travel and the  
Sponsoring Association are not responsible for any delays, delayed  
departure or arrival, missed carrier connections, loss, death, dam-  
age or injury to person or property or accident, mechanical defect,  
failure or negligence of any nature howsoever caused in connec-  
tion with any accommodations, transportation or other services or  
for any substitution of hotels or of common carrier equipment,  
with or without notice, or for any additional expenses occasioned  
thereby. Dates, Program Details and Tour costs, although given in  
good faith and based on tariffs, exchange rates and other informa-  
tion current at the time of printing, are subject to change at or  
before the time of departure. No revisions of the printed itinerary  
or its included features are anticipated; however, the right is  
reserved to make any changes, with or without notice, that might  
become necessary, with the mutual understanding that any addi-  
tional expenses will be paid by the individual passenger. Baggage  
and personal effects are the sole responsibility of the owners at  
all times. If the entire program is canceled for any reason, partici-  
pants shall have no claim other than for a full refund. By forward-  
ing the deposit, the passenger certifies that he/she has no physi-  
cal, mental or other condition of disability that would create a haz-  
ard for himself/herself or other passengers and accepts the terms  
of this contract set out herein and in more specific pre-departure  
passenger information. The airlines and other transportation com-  
panies concerned are not to be held responsible for any act, omis-  
sion, or event, during the time passengers are not on board their  
conveyances. The passage contract in use, when issued, shall con-  
stitute the sole contract between the company(ies) and the pas-  
senger and/or purchaser of this trip.

**CANCELLATION**-In addition to airline cancellation penalties, all can-  
cancellations for any reason whatsoever will be subject to a \$250 per  
person administrative fee. (Please note that you may choose, at  
the time of cancellation, to apply the withheld administrative fee to a  
future AHI Travel program that will operate in the current calen-  
dar year or year following.) Cancellation from 120 days to 76 days  
prior to departure will result in forfeiture of 10% of the entire cost  
of the trip per person; 75 days up to, 50% of the trip cost per person;  
cancellation from 75 days up to the time of departure will result in  
100% forfeiture of the entire cost of the trip. **TRIP CANCELLATION  
INSURANCE IS AVAILABLE. AN APPLICATION WILL BE SENT AFTER  
YOU RESERVE.** All cancellations must be submitted in writing to  
AHI International Corporation.

CST Registration No. 2028271-20. Fla. Seller of Travel  
Reg. No. ST-33300 Iowa Seller of Travel No. 520  
Ohio Seller of Travel Reg. No. 8889139.

Washington State Seller of Travel Reg. No. 601-820-781.  
PARTICIPATING AIRLINES-all IATA and ARC Member  
Carriers ©2015 AHI Travel Printed in the USA.

# LAND PROGRAM

March 12-22, 2016

Full Price	Special Savings	Special Price*
\$5,245	\$250	\$4,995*

\*Special Price valid if booked by the date found on the address panel.  
VAT is an additional \$395 per person.

All prices quoted are in USD, per person, based on double occupancy and do not include air transportation costs (unless otherwise stated). Single accommodations are an additional \$1,495 (limited availability).

## AHI FLEXAIR

March 11-23, 2016

Our personalized air program allows you to select your flights, routing, class of service and dates of travel in consultation with one of our experienced Passenger Service Representatives. Airfares will vary, depending on airline, routing and class of service. In most cases, transfers between the airport and hotel/cruise ship will be included on arrival and departure days. Your Passenger Service Representative will provide you with all of the details you need to guarantee your transfer. Book your air with us to ensure assistance in the case of schedule changes or delays that may impact your air travel plans. AHI FlexAir participants automatically receive flight insurance worth up to \$250,000, subject to policy terms.

## ITINERARY

Day 1	Depart Gateway City <sup>†</sup>
Day 2	Buenos Aires, Argentina
Day 3	Buenos Aires
Day 4	Buenos Aires
Day 5	Buenos Aires   San Carlos de Bariloche
Day 6	San Carlos de Bariloche
Day 7	San Carlos de Bariloche
Day 8	San Carlos de Bariloche   Puerto Varas, Chile
Day 9	Puerto Varas
Day 10	Puerto Varas   Puerto Montt   Santiago
Day 11	Santiago
Day 12	Santiago   Depart for Gateway City <sup>†</sup>
Day 13	Arrive in Gateway City <sup>†</sup>

**NOTE:** This itinerary schedule may change due to local conditions.  
<sup>†</sup>Provided for AHI FlexAir participants only



Spectacular view of the lakes of Nahuel Huapi National Park from Llao Llao Hotel & Resort



## | INCLUDED FEATURES |

### ACCOMMODATIONS

- **Three nights** in Buenos Aires, Argentina, at the deluxe **The Brick Hotel**.
- **Three nights** in San Carlos de Bariloche at the deluxe **Llao Llao Hotel & Resort**.
- **Two nights** in Puerto Varas, Chile, at the first-class **Hotel Patagónico**.
- **Two nights** in Santiago, at the deluxe **InterContinental Santiago**.

### MEALS

- **Enjoy an extensive meal program**, featuring 10 breakfasts, four lunches and four dinners; tea or coffee with all meals, plus wine with dinner.
- Sample authentic regional specialties during select meals at featured local restaurants.
- Take advantage of leisure time to try local cuisine independently.
- Attend a Welcome Reception.
- Gather for a Farewell Reception and Dinner.

### TRANSPORTATION

- **All flights, cruises and deluxe motor coach transfers** in the Land Program itinerary **and baggage handling** on these transfers are included.

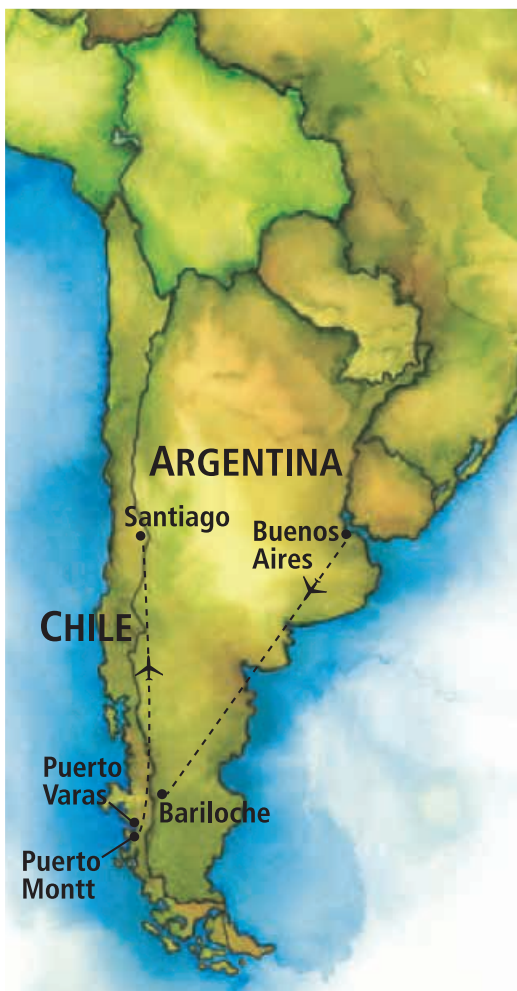
### YOUR EXCITING TRAVEL PROGRAM

*(For full details, refer to the day-by-day itinerary.)*

- **Informative educational programs**, presented by local experts, will enhance your insight into the region.
- **All Included Excursions:**
  - Explore renowned La Recoleta.
  - Stroll through bustling Buenos Aires.
  - Cruise pristine Lake Nahuel Huapi.
  - Cross the Andean Lakes to Chile.
  - Experience life on an authentic Chilean ranch.
  - Discover cosmopolitan Santiago.

### MANY INCLUDED EXTRAS

- Consultation services of a dedicated **Passenger Service Representative** prior to departure.
- Services of an experienced **Travel Director** throughout your stay.
- Detailed travel and destination information to assist you in your planning.
- Complimentary travel wallet.



**Chilean rancher**



**Puerto Montt**





JOHNS HOPKINS  
UNIVERSITY

Office of Alumni Relations  
San Martin Center, 2nd Floor  
3400 North Charles Street  
Baltimore, MD 21218

SAMERICA16 102



Chilean dancers



Buenos Aires

## Join alumni and friends on this journey of a lifetime!

**AHI Travel's** mission is to deliver inspirational educational and cultural travel programs that delight travelers.

***With AHI you can rely on:***

- Experienced Travel Directors who attend to every detail of your journey.
- An exceptional travel value.
- Unique access to local sites.
- Flexibility and customization.
- Safety and security.



***Please call or refer to our website for the most current program information, discounts and pricing.***

Presorted Std.  
U.S. Postage  
Paid  
AHI Travel