

SPECIAL
SMALL GROUP
LIMITED TO 28
TRAVELERS

Cultural Crossroads of

FRANCE

CARCASSONNE | TOULOUSE | BORDEAUX



JOHNS HOPKINS
UNIVERSITY

MAY 26-JUNE 4, 2015

AHI: 800-323-7373

www.alumni.jhu.edu

Joie de vivre

JOY OF LIVING

PROGRAM HIGHLIGHTS

- Discover three of France's most celebrated regions: **Languedoc-Roussillon, Midi-Pyrénées and Aquitaine.**
- Explore **Carcassonne**, a medieval walled city that looks as if it were plucked from a fairy tale.
- Savor an expertly prepared dinner at **La Barbacane**, a Michelin-starred restaurant.
- Cruise the **Canal du Midi**, the 17th-century technological marvel that helped to usher in the Industrial Revolution.
- Delight in wine tastings in the famous **Bordeaux wine** region and a tasting of **Armagnac brandy** in the historical region of **Gascony.**

UNESCO

The UNESCO World Heritage sites featured on this program are the **Historic Fortified City of Carcassonne; the Canal du Midi; the Episcopal City of Albi; Bordeaux, Port of the Moon; Jurisdiction of Saint-Émilion; and St. Sernin Basilica** (Toulouse) and **Cathédrale Sainte-Marie** (Auch), two churches on the French routes of the Way of St. James (El Camino de Santiago de Compostela).



Saint-Émilion

Discover the celebrated heritage of southwest France during a journey through the storied regions of Languedoc-Roussillon, Midi-Pyrénées and Aquitaine. Stretching from the foothills of the Pyrenées to the Atlantic Ocean, most of this land of rolling hills, fertile fields, fruitful orchards and old-world towns is historically known as Gascony. Among the French, this region of the country conjures the best images of the good life. It is here that the French refined the art of living. From the fields and kitchen, world-famous food and drink have emerged: slow-cooked cassoulet, buttery-rich foie gras, tender duck, smooth Armagnac and, of course, many varieties of wine. The romance with rustic and rural Gascony has even made its way into classic French literature; two of the world's most famous literary rogues — d'Artagnan, hero of "The Three Musketeers," and Cyrano de Bergerac of the eponymous play — hail from here. From your first glimpse of the picture-perfect fortified medieval city of Carcassonne to your last sip of celebrated Bordeaux wine, revel in the delights of this corner of the country.



Dear Johns Hopkins Alumni and Friends,

We invite you to join us on a fabulous journey through southwest France. This region — highly revered by the French, but largely undiscovered by others — is filled with its own unique culture and history. Before it became a part of France, it was known as Gascony. This is a place synonymous with good food and good wine. Mention “Gascogne” to the French, and they’ll tell you about the *douceur de vivre*, the sweetness of life, that is associated with this special area.

Our adventure begins in the fairy-tale town of Carcassonne. As it begins to appear upon approach, this medieval jewel seems too impossibly beautiful to be real. We’ll continue to Toulouse, called the Pink City because of the color of the terracotta bricks used in the construction of the buildings in its historic center, and Bordeaux, France’s wine capital.

This expertly planned itinerary features the perfect blend of planned activities and leisure time. Discover the history and culture of this special region of France through excursions led by expert guides and experiences such as wine tastings and a dinner at a Michelin one-star restaurant.

Space is limited, and this program is sure to be popular. Make your reservations now to avoid disappointment!

Sincerely,

Marguerite I. Jones

Marguerite I. Jones, A&S '74, Bus '88
Travel Program Director
Office of Alumni Relations
The Johns Hopkins University

“And now gentlemen, all for one, one for all — that is our motto, is it not?”

~ d’Artagnan from “The Three Musketeers” by Alexandre Dumas (1802-1870), French novelist

“For when we say there is nothing to see at Bordeaux, we mean there is everything to feel . . .”

~ Cyril Connolly (1903-1974), English writer, “Ideas and Places,” 1953

“I paint things as they are. I don’t comment.”

~ Henri de Toulouse-Lautrec (1864-1901), French painter

“A good meal ought to begin with hunger.”

~ French proverb



Southwest France is filled with historic, cultural and culinary treasures. On this exciting program, visit opulent cathedrals that once welcomed pilgrims traveling across Europe on their way to Santiago de Compostela, Spain, and delve into the turbulent relationship between the Catholic Church and the Cathars in Carcassonne, Albi and Toulouse. Cruise the Canal du Midi, a 17th-century engineering marvel. Visit Fources, one of the prettiest towns in France. Stroll through the hilltop fortress in Cordes-sur-Ciel. Enjoy an exclusive visit to see a world-class art collection in Toulouse, and delight in the beauty, wine and cuisine of Bordeaux and Saint-Émilion.

DAY ONE

Depart for Toulouse, France.†

†Provided for *AHI FlexAir* participants.

MICHELIN

Leads the Way to Fine Dining

For more than 100 years, the Michelin has dispatched its anonymous inspectors — cuisine, wine and service experts — to critique the food, wine and ambience of restaurants around the world with the goal of bestowing one, two or three stars to the best of them. What began in 1900 as a tool to help people plan their road trips through France has turned into the authoritative measure of the best in gourmet dining. What is a Michelin star? It is the Oscar of restaurants, the Pulitzer Prize of cooking, the Tony of the culinary stage. A Michelin star is a sure sign of excellence, quality, consistency and creativity, and restaurants can earn one, two or three of them.

DAY TWO

D

TOULOUSE, FRANCE | CARCASSONNE

Transfer† to the Hôtel de la Cité upon arrival.

Tonight, gather with your fellow travelers for a drink before a special Welcome Dinner.

DAY THREE

B | D

CARCASSONNE

Excursion: *The Walled City of Carcassonne.* This medieval citadel is one of the most historic and beautiful towns in France. The walled city also is the largest fortress in Europe. A walking tour of the old city includes visits to Château Comtal, an excellent example



A WATERSHED MOMENT

Built during the reign of Louis XIV, the Canal du Midi was more than a civil works project. It was a symbol of 17th-century France's power and status. The canal transcended its basic use as a man-made waterway by placing emphasis on both form and function. It was at once a major trade route and an architectural showcase for the 328 locks, aqueducts, bridges and the world's first canal tunnel along its 224 miles (360 kilometers). Architect Pierre-Paul Riquet also focused his attention on building a canal that complemented the varied landscapes along its path. The canal also advanced engineering and technology; Riquet conquered a water-supply challenge at the canal's highest point, the Naurouze watershed, by damming several streams to feed an artificial lake that provides enough water for the locks to operate. More than 12,000 workers toiled on the canal, which, according to UNESCO, was the largest civil works endeavor in Europe since Roman times.

the Place du Capitole, a vast plaza anchored by the neoclassical city hall. Visit St. Sernin Basilica, considered by many to be the most glorious of the churches along the Way of St. James. Stroll along the waterfront, and explore the city's old quarter.

Local Flavor: Enjoy lunch in the city.

Excursion: *An Afternoon of Art.* Admire a private art collection at the Hôtel d'Assézat, a magnificent Renaissance town home.

of a medieval fortress, and Saint-Nazaire Basilica, home to some of the most beautiful examples of stained glass from the Middle Ages.

Local Flavor: Tonight, dine at La Barbacane, the Michelin one-star restaurant in the Hôtel de la Cité, for a taste of French haute cuisine.

DAY FOUR

B I L I D

AUCH | FOURCES | TOULOUSE

Excursion: *Towns of Gascony.* Explore the land once known as Gascony. In Auch, the Cathédrale Sainte-Marie was a welcome stop for medieval pilgrims traveling to Santiago de Compostela, Spain. See the imposing Tower of Armagnac. Enjoy a tasting of the region's famous Armagnac brandy. Visit the 12th-century Abbey of Flaran, the ruins of a Gallo-Roman villa and the picturesque village of Fources, a typical fortified "bastide" found in southwestern France.

Local Flavor: Enjoy lunch in the charming town of Condom.

Check in to the Pullman Toulouse Centre.

Local Flavor: Cruise the Canal du Midi, the 17th-century engineering marvel that connects the Mediterranean Sea and the Atlantic Ocean, and enjoy dinner as the world floats by.

DAY FIVE

B I L L

TOULOUSE

Excursion: *Highlights of Toulouse.*

Explore France's fourth-largest city. Begin in



Saint-Émilion



Médoc Peninsula



Bordeaux

DAY SIX

B I L

ALBI | CORDES

Excursion: Medieval Fortresses. Albi has a remarkable ensemble of Gothic architecture, including the Palais de la Berbie, which now is the home of the world's largest collection of art created by the city's favorite son, Toulouse-Lautrec. Continue to Cordes-sur-Ciel, a medieval citadel with sweeping views of the Cérou valley. This charming, car-free town is perfect for exploring on foot.

Local Flavor: Enjoy lunch during your excursion.

DAY SEVEN

B I L I D

BORDEAUX

Travel to Bordeaux, home of the most famous winemakers in the world. Check in to the Hotel Burdigala.

Excursion: A Taste of Bordeaux. Embark on a walking tour of this great city. See the

Place de la Bourse, Place des Quinconces, Grand Theater and other great 18th-century monuments. Along the way, stop to taste local delicacies, including cheese made from ewe's milk, oysters and Bordeaux's famous pastry, the canelé.

Local Flavor: Enjoy dinner at a restaurant in Bordeaux.

DAY EIGHT

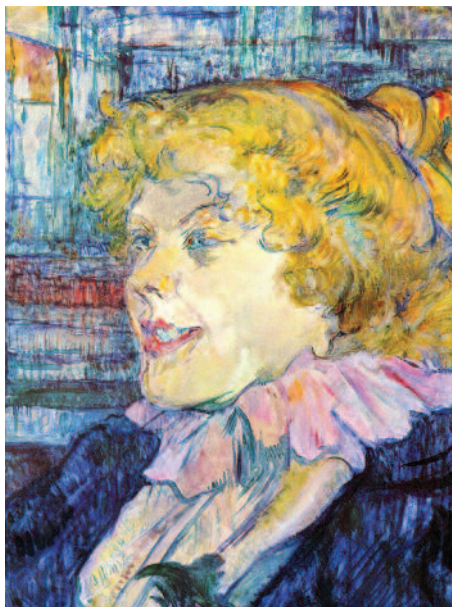
B I L

MÉDOC PENINSULA

Excursion: Bordeaux. Discover the legendary Médoc peninsula, home to the world's most famous wine estates: Lafite Rothschild, Margaux and Latour, among others. Enjoy wine tastings at two châteaux.

Henri de Toulouse-Lautrec

Henri de Toulouse-Lautrec, one of the most prolific and influential post-impressionist artists of the late 19th century, was just as famous for his lifestyle as he was for his art. Born into an aristocratic family in Albi, Toulouse-Lautrec seemingly started life with every advantage. But through his parents, who were first cousins, he inherited a bone condition (later to be known as Toulouse-Lautrec syndrome) that halted the growth of his legs and made walking painful. Confined to a sedentary lifestyle, the young Toulouse-Lautrec sought refuge in art. With dancers and prostitutes among his favorite models, he chose to paint the seamier side of Parisian life without any judgment. Art historians theorize that his own experience of being outside the mainstream fostered empathy with his subjects. In addition to his paintings, Toulouse-Lautrec was one of the most popular poster artists in Paris. Heavily influenced by Japanese woodcut printmaking, Toulouse-Lautrec created some of the most iconic advertising images for the Moulin Rouge and popular aperitifs, such as Dubonnet.



Top: Toulouse-Lautrec's "Portrait Of Miss Dolly"

Lower: Toulouse-Lautrec Museum in the Palais de la Berbie, Albi



Local Flavor: Savor a delicious lunch at a vineyard restaurant.

DAY NINE

B | D

BORDEAUX

Independent Exploration: Enjoy some time at leisure this morning in Bordeaux.

Excursion: Ancient Winemaking Traditions. Discover the most beautiful of

Bordeaux's wine-producing villages, Saint-Émilion, a delightful medieval city. From its cobblestone streets to the remains of the old ramparts to the catacombs of the monolithic church, Saint-Émilion is one of France's most beautiful towns.

Local Flavor: Tonight, a winemaker will welcome you to his Pomerol estate. Hear the story of the wine of this region and see the estate's wine cellars before a festive Farewell Dinner.

DAY TEN

B

Transfer to the airport for the return flight to your gateway city.†

NOTE: Itinerary subject to change. Some events on this program involve an element of walking.

Included meals indicated each day as B | L | D = Breakfast | Lunch | Dinner.

| ACCOMMODATIONS |



HÔTEL DE LA CITÉ CARCASSONNE

Enjoy a luxurious stay at this elegant hotel within the walls of Carcassonne. After a day of exploring this storybook town, meet friends for a cocktail in the Library Bar or the Bar Lounge. The hotel also has three excellent restaurants, including Michelin-starred La Barbacane. The hotel has a seasonal outdoor pool and offers massage and spa treatments. Wi-Fi is available.

PULLMAN TOULOUSE CENTRE TOULOUSE

Situated in the heart of Toulouse, this elegant hotel is ideally located to explore the highlights of the city. Museums, shops and more are just a short stroll away. The Pullman has a fitness center, a wine bar and three restaurants. Wi-Fi is available.



HOTEL BURDIGALA BORDEAUX

Enjoy a luxurious stay at the Hotel Burdigala. The hotel has a fine-dining restaurant with a menu that features the best of the region's seasonal produce. The restaurant also has a wine cellar with a fine selection of Bordeaux wines. Before or after dinner, stop by the wine bar to try other local vintages. Wi-Fi is available.



Reserve your trip to France today!

Send to: Cultural Crossroads of France
The Johns Hopkins University
c/o AHI Travel
International Tower-Suite 600
8550 W. Bryn Mawr Avenue
Chicago, IL 60631

Trip #: 3-21597W

Please contact AHI Travel at 800-323-7373 with questions regarding this tour. For questions regarding Johns Hopkins, please call 800-JHU-JHU1(548-5481) or Email: travel@jhu.edu.

Full Legal Name (exactly as it appears on passport)

(1) _____
Title First Middle Last Date of Birth

Email: _____

(2) _____
Title First Middle Last Date of Birth

Email: _____

Street Address: _____

City: _____

State: _____ ZIP: _____

Home: (_____) Cell: (_____) _____

Sharing with _____. (Form sent separately.)

I/we authorize you to make my/our reservations as follows:

Land Program and AHI FlexAir

I/we reserve the Land Program and request the AHI FlexAir to Toulouse, France, with a return from Bordeaux to depart from:

Departure City _____

- Please contact me regarding air options.
- Please send me information on upgrading my flights.

Land Program

- I/we will make my/our own air arrangements and transfers.
- I prefer single accommodations at an additional \$795 (limited availability).
- I request assistance in securing a roommate but will accept a single, if one is available at this time, and pay the single supplement. Should a roommate be found, I understand the supplement will no longer apply.

Reservations are subject to availability and processed on a first come, first served basis. Reservations to be paid in full by March 12, 2015 (75 days prior to departure). Reservations received after this date must be accompanied by payment in full. Final payment may be made by personal check, MasterCard, Visa or Discover. Make checks payable to AHI International.

Note: A small portion of the cost of your trip supports the Johns Hopkins Alumni Travel Program.

Eligibility: At least one member of the traveling party is required to make a sustaining financial contribution of \$50 or more to the Johns Hopkins Alumni Association within the fiscal year. Please visit alumni.jhu.edu/support.

I understand the conditions stated in this brochure and submit my reservation as indicated.

Signature _____ Date _____

Enclosed is a deposit of _____ (\$600 per person required) to reserve _____ place(s).

- Accept my check made payable to **AHI International**.
- Charge my: MasterCard Visa Discover Expires _____ / _____

Card # _____

(Signature as it appears on credit card)

Please note: Any payment to AHI International constitutes your acceptance of the terms and conditions set out herein, including but not limited to the cancellation terms.

NEW ULTIMATE FLEXIBILITY: The AHI Travel Passenger Protection Plan now offers a low-cost **Any Reason Cancellation** feature. Book worry free!
NOT INCLUDED: Fees for passports and, if applicable, visas, entry/departure fees; personal gratuities; laundry and dry cleaning; excursions, wines, liquors, mineral waters and meals not mentioned in this brochure under included features; travel insurance; all items of a strictly personal nature.
MOBILITY AND FITNESS TO TRAVEL: The right is retained to decline to accept or to retain any person as a member of this trip who, in the opinion of AHI Travel is unfit for travel or whose physical or mental condition may constitute a danger to themselves or to others on the trip, subject only to the requirement that the portion of the total amount paid which corresponds to the unused services and accommodations be refunded. Passengers requiring special assistance, including without limitation those who permanently or periodically use a wheelchair, must be accompanied by someone who is fit and able to assist them, and who will be totally responsible for providing all required assistance.

AIR TRANSPORTATION: The price of air transportation offered by AHI Travel is based on Advance Purchase Excursion fares. After tickets are issued, penalties up to 100% of the ticket price may be levied. If connecting flights are requested, special promotional fares may be used, in which case penalties of as much as 100% may be assessed by the airlines if reservations are changed or canceled after ticketing. After departure, if the reservations are changed, you will be charged the higher, all year Economy class fare. **VARIATIONS TO THE GROUP ITINERARY MUST BE REQUESTED NO LATER THAN 60 DAYS PRIOR TO DEPARTURE.** Passengers who choose to make their own airline reservations independently will be wholly responsible for any airline fees or penalties incurred as a result of program cancellation and/or change in travel dates, or airline schedule(s).

BAGGAGE: Baggage restrictions vary according to the airline policy and the class of service flown. Details will be provided with your pre-departure information. Baggage allowances are subject to change by the carrier without notice. Excess baggage charges for additional or oversized/overweight pieces are expensive and not included in your trip price; plan your wardrobe accordingly. Transport of baggage and personal effects is at the owner's risk throughout the travel program.

AUTHORITY TO USE IMAGES AND AUDIO RECORDINGS: On occasion, AHI Travel obtains, from its staff, or from trip participants, photographic or video images of passengers and trip activities. By participating in this travel program, you authorize AHI Travel, without providing compensation to you, or obtaining additional approvals from you, to include photographic and video recordings of you, as well as voice recordings included with any videos, in AHI Travel's sales, marketing, advertising, publicity and/or training activities.

RESPONSIBILITY: AHI Travel and the Sponsoring Association do not own or operate any entity which provides goods or services for this program, and act only as agents for the independent suppliers of travel conveyance, transport, accommodations or other services. All such persons or entities are independent contractors. As a result, AHI Travel and the Sponsoring Association are not liable for any negligence or willful act of any such person or entity or any third person. In addition and without limitation, AHI Travel and the Sponsoring Association are not responsible for any delays, delayed departure or arrival, missed carrier connections, loss, death, mechanical or injury to person or property or accident, damage, defect, failure or negligence of any nature whatsoever caused in connection with any accommodations, transportation or other services or for any substitution of hotels or of common carrier equipment, with or without notice, or for any additional expenses occasioned thereby. Dates, Program Details and Tour costs, although given in good faith and based on tariffs, exchange rates and other information current at the time of printing, are subject to change at or before the time of departure. No revisions of the printed itinerary or its included features are anticipated; however, the right is reserved to make any changes, with or without notice, that might become necessary, with the mutual understanding that any additional expenses will be paid by the individual passenger. Baggage and personal effects are the sole responsibility of the owners at all times. If the entire program is canceled for any reason, participants shall have no claim other than for a full refund. By forwarding the deposit, the passenger certifies that he/she has no physical, mental or other condition of disability that would create a hazard for himself/herself or other passengers and accepts the terms of this contract set out herein and in more specific pre-departure passenger information. The airlines and other transportation companies concerned are not to be held responsible for any act, omission, or event, during the time passengers are not on board their conveyances. The passage contract in use, when issued, shall constitute the sole contract between the company(ies) and the passenger and/or purchaser of this trip.

CANCELLATION: In addition to airline cancellation penalties, all cancellations for any reason whatsoever will be subject to a \$250 per person administrative fee. (Please note that you may choose, at the time of cancellation, to apply the withheld administrative fee to a future AHI Travel program that will operate in the current calendar year or year following.) Cancellation from 120 days to 76 days prior to departure will result in forfeiture of 10% of the entire cost of the trip per person; 75-30 days, 50% of the trip cost per person; cancellation from 29 days up to the time of departure will result in 100% forfeiture of the entire cost of the trip. **TRIP CANCELLATION INSURANCE IS AVAILABLE. AN APPLICATION WILL BE SENT AFTER YOU RESERVE.** All cancellations must be submitted in writing to AHI International Corporation.

If you are interested in making independent travel arrangements before and/or after this program, please contact **AHI Travel** at 800-323-7373 no later than **60 days prior to departure** and they will be happy to assist you with your reservations. *A nonrefundable service fee and additional air/land charges based on reservations apply.*

CST Registration No. 2028271-20. Fla. Seller of Travel Reg. No. ST-33300 Iowa Seller of Travel No. 520 Ohio Seller of Travel Reg. No. 8889139. Washington State Seller of Travel Reg. No. 601-820-871. PARTICIPATING AIRLINES-all IATA and ARC Member Carriers ©2014 AHI Travel Printed in the USA.

LAND PROGRAM

May 27-June 4, 2015

Full Price

\$4,845

Special Savings

\$250

Special Price*

\$4,595*

*Special Price valid if booked by the date found on the address panel.
VAT is an additional \$395 per person.

All prices quoted are in USD, per person, based on double occupancy and do not include air transportation costs (unless otherwise stated). Single accommodations are an additional \$795 (limited availability).

AHI FLEXAIR

May 26-June 4, 2015

Our personalized air program allows you to select your flights, routing, class of service and dates of travel in consultation with one of our experienced Passenger Service Representatives. Airfares will vary, depending on airline, routing and class of service. In most cases, transfers between the airport and hotel/cruise ship will be included on arrival and departure days. Your Passenger Service Representative will provide you with all of the details you need to guarantee your transfer. Book your air with us to ensure assistance in the case of schedule changes or delays that may impact your air travel plans.

ITINERARY

Day 1	Depart Gateway City [†]
Day 2	Arrive in Toulouse, France Carcassonne
Day 3	Carcassonne
Day 4	Toulouse
Day 5	Toulouse
Day 6	Toulouse
Day 7	Bordeaux
Day 8	Bordeaux
Day 9	Bordeaux
Day 10	Return to Gateway City [†]

NOTE: This itinerary schedule may change due to local conditions.

[†]Provided for AHI FlexAir participants



Medieval walled city of Carcassonne

| INCLUDED FEATURES |

ACCOMMODATIONS

- **Two nights** in **Carcassonne, France**, at the deluxe **Hôtel de la Cité**.
- **Three nights** in **Toulouse** at the deluxe **Pullman Toulouse Centre**.
- **Three nights** in **Bordeaux** at the deluxe **Hotel Burdigala**.

MEALS

- **Enjoy an extensive meal program**, featuring eight breakfasts, five lunches and five dinners. Tea or coffee is included with all meals, plus wine with dinner. Take advantage of leisure time to try local cuisine independently.
- Sample authentic regional specialties at local restaurants.
- Attend a special Welcome Dinner and a festive Farewell Dinner.

TRANSPORTATION

- All deluxe motor coach transfers in the Land Program itinerary and baggage handling on these transfers are included.

YOUR EXCITING TRAVEL PROGRAM

- **Informative educational programs** presented by local experts to enhance your insight into the region.
- **Personal VOX listening devices** allow you to hear every word from your expert, English-speaking guides.



• **All excursions:**

- Explore Carcassonne, a beautiful walled city, and savor dinner at a Michelin one-star restaurant.
- Discover the historic area of Gascony during an excursion to Auch, Condom, and the bastide of Fources, and sip Armagnac brandy during a special tasting.
- Cruise the Canal du Midi.
- Enjoy the sights of Toulouse.
- Marvel at a private art collection exhibited at a Renaissance home.
- Visit Albi to see the city's monuments and a spectacular museum devoted to works of Toulouse-Lautrec, who was born here.
- Discover the city of Bordeaux and take a gourmet walking tour.
- Explore the Médoc peninsula, where the world's most famous wines are produced, and enjoy wine tastings and a lunch at a vineyard restaurant.
- Visit the medieval town of Saint-Émilion and its vineyards.

MANY INCLUDED EXTRAS

- Consultation services of a dedicated **Passenger Service Representative** prior to departure.
- Services of an experienced **Travel Director** throughout your stay.
- Tipping of all guides and drivers.
- Detailed travel and destination information to assist you in your planning.
- Complimentary travel wallet.





Presorted Std.
U.S. Postage
Paid
AHI Travel

Top to bottom:

Saint-Émilion
Vineyard
Musicians
Wine casks

Cover photos:

Vineyards and
Carcassonne



A word about your Tour Operator

AHI Travel is the premier operator of deluxe travel programs sponsored by alumni associations. Their experienced, professional staff has offered the highest level of service in **innovative travel programs since 1962.**

In AHI Travel's care, you can rely on:

- **An exceptional travel value.** It would be impossible for an independent traveler to arrange all these unique experiences, inclusions and services at a comparable price.
- **Unique access to local sites.** Take advantage of more than 50 years of travel experience to gain preferred entrance to popular sites and to uncover the region's hidden treasures.
- **Experienced Travel Directors** who attend to every detail of your journey.
- **Expertise of local guides** who possess authoritative knowledge of the region and offer personal insight into local culture.
- **Flexibility and customization.** Free time during the trip allows you to pursue your own interests. They will also help you tailor your dream trip with add-ons and extensions.
- **Safety and security.** In a country where you might not know the language or culture, their professional staff is on hand to ease your way and get you any help you need.



Like us at [facebook.com/ahitravel](https://www.facebook.com/ahitravel)



Follow us at [twitter.com/ahitravel](https://www.twitter.com/ahitravel)



View our webinars at [youtube.com/ahitravel](https://www.youtube.com/ahitravel)



Office of Alumni Relations
San Martin Center, 2nd Floor
3400 North Charles Street
Baltimore, MD 21218

FRACRBOR15 102

**Please call or refer to our
website for the most cur-
rent
program information,
discounts and pricing.**