

Burgundy



Lyon | Tournus | Dijon | Beaune



JOHNS HOPKINS
UNIVERSITY

OCTOBER 10-20, 2014

800-323-7373

www.alumni.jhu.edu



Chalon-sur-Saône

T

here's a reason Burgundy is the country escape of urban Parisians: Calm, comfort and hospitality await you among its picturesque vineyards, historic estates and friendly villages. Most Burgundian towns were built along the canals and rivers, with elaborate quays and a market area accessible to passing boats, making it the perfect region to explore by water. Even if you've already traveled through France, you've never seen it like this. Relax aboard your fully crewed hotel barge and enjoy gourmet cuisine, fine wines and the company of your fellow passengers, and toast à votre santé — to your health!



*Bonjour
Bourgogne!*

PROGRAM HIGHLIGHTS

- Spend three memorable nights in **Lyon**, a UNESCO World Heritage site and the capital of French gastronomy.
- Learn about French cuisine during a **specialty arranged cooking class**.
- Experience the intimacy and romance of a canal barge during a **three-night cruise through the heart of Burgundy**.
- Engage in **shore excursions** by foot, motor coach and bicycle.
- Explore the charm and history of the towns of **Dijon, Rully, Chalon-sur-Saône** and **Tournus** on guided walking tours.
- Enjoy the art and architecture of **Beaune**, the jewel of Burgundy, during a three-night stay.

UNESCO

The Historic Site of **Lyon** is a UNESCO World Heritage site featured on this program.





Dear Johns Hopkins Alumni and Friends,

Discover Burgundy, one of the most beautiful regions in France, as you've never seen it before. The highlight of your journey is a romantic barging experience along the waterways of Burgundy aboard the intimate Caprice. Bookend your cruise with three nights each in historic Lyon and unforgettable Beaune.

Travel behind the scenes in France with our Small-Group program, which combines the security, ease and value of group travel with opportunities for independent exploration. Your itinerary has been specially planned by travel experts to include incomparable cultural experiences, behind-the-scenes excursions and preferred access to popular attractions. Enjoy the camaraderie of traveling with a group of like-minded people and, during your free time, feel the thrill of making your own discoveries!

An experienced Travel Director takes care of every detail during your journey, and a dedicated travel staff is committed to ensuring your trip creates many fond memories. Best of all, expert guides lead you on fascinating excursions that offer an in-depth look at the local culture and history of the Burgundy region.

Space on this exclusive journey is limited to 18 travelers, and the trip is sure to sell out quickly, so make your reservations today!

Sincerely,

Marguerite I. Jones

Marguerite I. Jones, A&S '74, Bus '88
 Travel Program Director
 Office of Alumni Relations
 The Johns Hopkins University

*The Caprice leisurely
 traversing Burgundy's
 waterways*

*"A journey is best
 measured in friends,
 rather than miles."*

~ Tim Cahill
 (b. 1943), American writer

*"The sweetness and
 generosity and politeness
 and gentleness and
 humanity of the French
 has shown me how lovely
 life can be if one takes
 time to be friendly."*

~ Julia Child
 (1912-2004),
 American chef and author,
 "My Life in France," 2006

*"The real voyage of
 discovery consists not in
 seeing new landscapes,
 but in having new eyes."*

~ Marcel Proust
 (1871-1922), French novelist

*"Wandering re-establishes
 the original harmony
 which once existed
 between man and the
 universe."*

~ Anatole France
 (1871-1922), French novelist



Right:
Château de
Rully

Below:
St. Philibert
Abbey,
Tournus

Below right:
Hospices de
Beaune



Relax for three nights in in Lyon, a chic metropolis replete with historic landmarks, awe-inspiring restaurants, lovely parks and romantic riverside paths. Embark on a leisurely, three-night barging experience aboard the cozy Caprice, which offers a wholly unique perspective on the serene charm and romance of the French countryside. Conclude your voyage with three nights in enchanting Beaune. Walk the bustling streets of Dijon, and discover France's beautiful vineyards and splendid chateaux along the legendary Route des Grands Crus.



DAY ONE

IN TRANSIT

Depart for Lyon, France.†

†Provided for Air Program participants.

DAY TWO

LYON

D

Upon arrival, transfer† and check in to the Hôtel Carlton Lyon. Spend the afternoon relaxing or exploring at your leisure.

Tonight, get to know your fellow travelers during a Welcome Dinner at a local bouchon, a traditional Lyonnais restaurant.

DAY THREE

LYON

B I L

Enjoy an included breakfast at your hotel each morning throughout your trip.

Excursion: Lyon. Spend the morning on a walking tour of Lyon. This sophisticated city has

France by Barge

*Unparalleled
river travel*



been one of the most populated in Europe for the past six centuries. Explore the historic Presqu'île, Rue Victor-Hugo, the Opera Nouvel and the Place des Terreaux.

Cultural Event and Local Flavor:

Cooking Class. Learn tips and secrets about French cuisine. The lesson includes how to choose ingredients, how to cook in the native style and how to prepare your delectable dishes. Afterward, enjoy your prepared lunch.

Independent Exploration: The afternoon is yours to explore Lyon at your leisure.

DAY FOUR

LYON

B

Excursion: *Vieux Lyon.* Learn of the beauty and history of Lyon's oldest district, known as Old St. Jean, on a guided walking tour. Discover the fascinating Traboules.

Independent Exploration: The afternoon is yours to explore Lyon at your leisure.

DAY FIVE

LYON | TOURNUS

B | L | I | D

Excursion: *Les Halles and Fourvière.*

Spend your final morning in Lyon visiting some of its most unforgettable corners. Stroll the local food market at Les Halles. Explore the district of Fourvière, the site of the city's original Roman settlement in the first century B.C. Soak in remarkable views at the confluence of the Saône and Rhône rivers as well as the magnificent Basilica of Notre-Dame de Fourvière, built in 1872. Then board a deluxe motor coach and transfer

The Art of Barging

Every traveler should experience a voyage by barge. This intimate, slow-moving pleasure cruise takes you away from other tourists and major roadways to reveal the rolling hills, inviting pastures, prestigious vineyards and riverside stone villages of Burgundy, one of France's most unforgettable regions.

A day aboard the charming *Caprice* is the quintessence of leisure travel. Wake to the sun and enjoy a morning coffee on deck as the barge floats through the dreamy contours of the Burgundian waterways at walking speed. You may choose to disembark once docked, whether for an organized excursion, a spontaneous bicycle ride to a nearby castle or a stroll along the canal to stretch your legs.

Rejoin the ship to traverse the river locks, a unique and fascinating experience you will not soon forget. Or perhaps the aromas of the kitchen will draw you back onboard, as the chef prepares gourmet regional cuisine that is (of course!) paired with local vintages. In the evening, enjoy happy hour and the company of your fellow travelers before dinner. After the sun has set, retire to your snug private cabin.

The essence of pleasure barging is the social experience. With just 18 voyagers plus your Travel Director, you will undoubtedly find kindred spirits and travel companions with whom you will share adventures. Get swept up in the pride of the crew, each of whom displays a fervent love and deep-seated knowledge of the region. This is truly *la bonne vie* — the good life!

to Tournus, where you'll embark the *Caprice*.

Local Flavor: Along the way, stop at a local winery for lunch and a tasting.

CAPRICE | Barge Hotel

Cruise the French waterways aboard the two-deck Caprice, a Dutch-built barge that, at 128 feet (39 metres), is one of the largest found along the French canals. The main deck features a spacious, canopied sun deck and lounge with a bar area and a dining room with picture windows, while the lower deck is dedicated to cozy cabins, each with a private bathroom. Walk along the riverbank, or borrow one of the barge's 10 multispeed bicycles. Discuss barging life with the captain during happy hour, mingle with your fellow travelers and feast on gourmet, home-cooked meals during this unparalleled travel experience.



Excursion: Tournus. Upon your arrival in Tournus, explore this distinctively Mediterranean-flavored town, which is famous for its flat roofs and narrow streets. Walk in the medieval town center and visit the 11th-century St. Philibert Abbey, a landmark of Romanesque architecture.

Embark the Caprice and enjoy a welcome Kir Royal and the presentation of the crew, then settle into your cabin. Breakfast, lunch and dinner will be served aboard the ship each day during your cruise.

DAY SIX

CHALON-SUR-SAÔNE | FRAGNES

B I L I D

Cruise along the magnificent, tranquil Saône.

Excursion: Chalon. Take in the fine architecture during a walking tour of Chalon, the birthplace of photography. You may choose to visit a museum dedicated to local resident Nicéphore Niépce, the father of photography, who produced the world's first known photograph — a shot of Burgundy taken from his upstairs window — in 1825.



Cruise toward Fragnes, and experience the unique sensation of the Caprice ascending 30 feet through a river lock to enter the Canal du Centre.

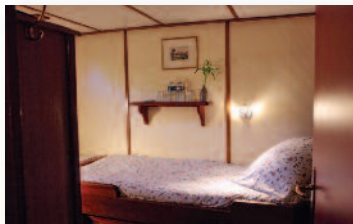
DAY SEVEN

RULLY | SANTENAY |

ST. LÉGER-SUR-DHEUNE B I L I D

Float along the magnificent canal-side scenery in the heart of the Chalonnais and Côte de Beaune wine regions. Take advantage of opportunities to walk or cycle beside the Canal du Centre.

Excursion: Santenay. After lunch, stop for a look around Santenay, a renowned wine-



Below:
Interior,
Basilica of
Notre-Dame
de Fourvière,
Lyon



DAY NINE

DIJON | CÔTE D'OR

B | L

Excursion: *Dijon*. Stroll through the historic town center of Dijon, the capital of the Côte d'Or region and a masterpiece of European architecture. Admire its stately stone mansions and half-timbered houses, which date from the 15th and 16th centuries.

Local Flavor: Feast on a traditional, home-style lunch.

Excursion: *The Route des Grands Crus*. Embark on a scenic drive along the road that links the wine-producing towns of the Côte d'Or. Visit Gevrey-Chambertin, a charming village known for its Côte-de-Nuits wines, and explore the Château du Clos de Vougeot, a Renaissance mansion beloved by Burgundy wine enthusiasts. Conclude with a visit and a wine tasting at the incredible 17th-century Château de Meursault.

DAY TEN

BEAUNE

B | D

The day is yours to relax or explore Beaune at your leisure. Gather for a Farewell Dinner at a Beaune restaurant.

DAY ELEVEN

IN TRANSIT

B

After breakfast, transfer⁺ to the Lyon airport for the return flights to your gateway city.

NOTE: *Itinerary subject to change. Some events on this program involve an element of walking.*

Included meals indicated each day as B | L | D = Breakfast | Lunch | Dinner.

producing village and home to a castle that once belonged to Philip the Bold, Duke of Burgundy. Savor a special wine tasting. Return to the Caprice and continue to St. Léger-sur-Dheune, where the barge overnights.

Excursion: *Rully*. Explore this small commune and visit its 12th-century château and winery for a tour.

This evening, join your fellow travelers for a special Farewell Dinner aboard the Caprice.

DAY EIGHT

BEAUNE

B | L

After breakfast, disembark the Caprice in St. Léger-sur-Dheune and transfer to Beaune.

Excursion: *Beaune*. Go on a walking tour of this picturesque city ringed by ramparts and wine cellars. Visit the 15th-century Hospices de Beaune, a Gothic masterpiece that served for centuries as a hospital for the poor. The building is now a museum and the site of Burgundy's famous charity wine auction.

Local Flavor: Lunch is served at a Beaune restaurant.

Independent Exploration: The afternoon is yours to explore Beaune at your leisure.

Check in to the Hôtel Le Cep.

| ACCOMMODATIONS |



HÔTEL LE CEP
BEAUNE

A member of the prestigious Small Luxury Hotels of the World association, the Hôtel Le Cep is a romantic hideaway located within Beaune's historic ramparts. The boutique hotel features modern guest rooms with Wi-Fi, an elegant garden, a fitness center, a hotel bar and the gourmet, Michelin-starred Loiseau des Vignes. In 2012, the readers of Travel + Leisure magazine listed the Hôtel Le Cep as one of the world's 500 best hotels.



HÔTEL CARLTON LYON
LYON

Opened in 1894 and located on Lyon's famous Presqu'île, the historic Hôtel Carlton is ideally situated for exploring restaurants, museums, shops and the city's landmarks. It also is conveniently located near a metro stop. Sip a Rouge Carlton, the signature cocktail at the hotel's bar, before striking out to explore the sophisticated capital city of French cuisine. The hotel also has a spa with a hammam, a Turkish bath. Wi-Fi is available throughout the hotel.

French Wine Classification: *"Appellations d'Origine"*

As the world's largest wine producer, France knows that a wine is only as good as its grapes. As such, French law is strict on wine classification, beginning with the grape varieties, or cépages, and their region of origin. Analyzed by Institut National des Appellations d'Origine, the oversight board of the French wine industry, French wines are carefully subdivided into three categories:



1. Vin de Table, table wine, is the lowest classification and encompasses about half of all wine produced in France. If the grapes were grown entirely in France, it can be called "vin de table français."
2. Indication Géographique Protégée (IGP) or Vin de Pays, a step up from table wine, guarantees the grapes came from a specific French region and that the wine meets that region's production, taste and aroma standards.
3. Appellation d'Origine Contrôlée (AOC), the topmost wine category, is reserved for a few hundred of the finest French wines. These wines are rigorously accredited and adhere to unassailable qualities of taste, cultivation methods and localization.



Reserve your trip to Burgundy today!

For Office Use Only: B #: _____ Date: _____

Trip #:22-21471W

PSR: _____

Send to: Barging in Burgundy
The Johns Hopkins University
c/o AHI Travel
International Tower-Suite 600
8550 W. Bryn Mawr Avenue
Chicago, IL 60631

Please contact AHI Travel at **800-323-7373** with questions regarding this tour. For questions regarding Johns Hopkins, please call **800-JHU-JHU1(548-5481)** or Email: **travel@jhu.edu**.

Full Legal Name (exactly as it appears on passport)

(1) _____
Title First Middle Last Date of Birth

(2) _____
Title First Middle Last Date of Birth

Street Address _____

City _____

State _____ ZIP _____

Home: (_____) _____ Office: (_____) _____

Email: _____

Sharing with _____ (Form sent separately.)

**I/we authorize you to make my/our reservations as follows:
Land/Cruise and Air Program**

I/we reserve the Land/Cruise Program and request the round-trip Air Program to and from Lyon, France, to depart from:

Departure City

Please send me information on upgrading my flights.

*Please note: Air prices will be sent to you with your Reservation Confirmation and air schedule sent at 90 days before departure. International flight arrangements can be canceled with **no obligation up to 75 days before departure.***

Land/Cruise Program

- I/we will make my/our own air arrangements and transfers.
- I prefer single accommodations at an additional \$3,395 (limited availability).
- I request assistance in securing a roommate but will accept a single, if one is available at this time, and pay the single supplement. Should a roommate be found, I understand the supplement will no longer apply.

Reservations are subject to availability and processed on a first come, first served basis. Reservations to be paid in full by July 27, 2014 (75 days prior to departure). Reservations received after this date must be accompanied by payment in full. Final payment may be made by personal check, MasterCard, Visa or Discover. Make checks payable to AHI International.

Note: A small portion of the cost of your trip supports the Johns Hopkins Alumni Travel Program.

Eligibility: At least one member of the traveling party is required to make a sustaining financial contribution of \$50 or more to the Johns Hopkins Alumni Association within the fiscal year. Please visit alumni.jhu.edu/support.

I understand the conditions stated in this brochure and submit my reservation as indicated.

Signature _____ Date _____

Enclosed is a deposit of _____ (\$600 per person required) to reserve _____ place(s).

- Accept my check made payable to **AHI International**.
- Charge my: MasterCard Visa Discover

Card # _____

Expires _____ / _____

(Signature as it appears on credit card)

Please note: Any payment to AHI International constitutes your acceptance of the terms and conditions set out herein, including but not limited to the cancellation terms.

NEW ULTIMATE FLEXIBILITY: The AHI Travel Passenger Protection Plan now offers a low-cost **Any Reason Cancellation** feature. Book worry free!

NOT INCLUDED: Fees for passports and, if applicable, visas, entry/departure fees; personal gratuities; laundry and dry cleaning; excursions, wines, liquors, mineral waters and meals not mentioned in this brochure under included features; travel insurance; all items of a strictly personal nature. **MOBILITY AND FITNESS TO TRAVEL:** The right is retained to decline to accept or to retain any person as a member of this trip who, in the opinion of AHI Travel is unfit for travel or whose physical or mental condition may constitute a danger to themselves or to others on the trip, subject only to the requirement that the portion of the total amount paid which corresponds to the unused services and accommodations be refunded. Passengers requiring special assistance, including without limitation those who permanently or periodically use a wheelchair, must be accompanied by someone who is fit and able to assist them, and who will be totally responsible for providing all required assistance.

AIR TRANSPORTATION: The price of air transportation offered by AHI Travel is based on Advance Purchase Excursion fares. After tickets are issued, penalties up to 100% of the ticket price may be levied. If connecting flights are requested, special promotional fares may be used, in which case penalties of as much as 100% may be assessed by the airlines if reservations are changed or canceled after ticketing. After departure, if the reservations are changed, you will be charged the higher, all year Economy class fare. **VARIATIONS TO THE GROUP ITINERARY MUST BE REQUESTED NO LATER THAN 60 DAYS PRIOR TO DEPARTURE.** Passengers who choose to make their own airline reservations independently will be wholly responsible for any airline fees or penalties incurred as a result of program cancellation and/or change in travel dates, or airline schedule(s).

CANCELLATION: In addition to airline cancellation penalties, all cancellations for any reason whatsoever will be subject to a \$250 per person administrative fee. [Please note that you may choose, at the time of cancellation, to apply the withheld administrative fee to a future AHI Travel program that will operate in the current calendar year or year following.] Cancellation from 120 days to 75 days prior to departure will result in forfeiture of 10% of the entire cost of the trip per person; 75-30 days, 50% of the trip cost per person; cancellation from 29 days up to the time of departure will result in 100% forfeiture of the entire cost of the trip. **TRIP CANCELLATION INSURANCE IS AVAILABLE. AN APPLICATION WILL BE SENT AFTER YOU RESERVE.** All cancellations must be submitted in writing to AHI International Corporation.

BAGGAGE: Baggage restrictions vary according to the airline policy and the class of service flown. Details will be provided with your pre-departure information. Baggage allowances are subject to change by the carrier without notice. Excess baggage charges for additional or oversized/overweight pieces are expensive and not included in your trip price; plan your wardrobe accordingly. Transport of baggage and personal effects is at the owner's risk throughout the travel program.

AUTHORITY TO USE IMAGES AND AUDIO RECORDINGS: On occasion, AHI Travel obtains, from its staff, or from trip participants, photographic or video images of passengers and trip activities. By participating in this travel program, you authorize AHI Travel, without providing compensation to you, or obtaining additional approvals from you, to include photographic and video recordings of you, as well as voice recordings included with any videos, in AHI Travel's sales, marketing, advertising, publicity and/or training activities.

RESPONSIBILITY: AHI Travel and the Sponsoring Association do not own or operate any entity which provides goods or services for this program, and act only as agents for the independent suppliers of travel conveyance, transport, accommodations or other services. All such persons or entities are independent contractors. As a result, AHI Travel and the Sponsoring Association are not liable for any negligence or willful act of any such person or entity or any third person. In addition and without limitation, AHI Travel and the Sponsoring Association are not responsible for any delays, delayed departure or arrival, missed carrier connections, loss, death, damage or injury to person or property or accident, mechanical defect, failure or negligence of any nature whatsoever caused in connection with any accommodations, transportation or other services or for any substitution of hotels or of common carrier equipment, with or without notice, or for any additional expenses occasioned thereby. Dates, Program Details and Tour costs, although given in good faith and based on tariffs, exchange rates and other information current at the time of printing, are subject to change at or before the time of departure. No revisions of the printed itinerary or its included features are anticipated; however, the right is reserved to make any changes, with or without notice, that might become necessary, with the mutual understanding that any additional expenses will be paid by the individual passenger. Baggage and personal effects are the sole responsibility of the owners at all times. If the entire program is canceled for any reason, participants shall have no claim other than for a full refund. By forwarding the deposit, the passenger certifies that he/she has no physical, mental or other condition of disability that would create a hazard for himself/herself or other passengers and accepts the terms of this contract set out herein and in more specific pre-departure passenger information. The airlines and other transportation companies concerned are not to be held responsible for any act, omission, or event, during the time passengers are not on board their conveyances. The passenger contract in use, when issued, shall constitute the sole contract between the company(ies) and the passenger and/or purchaser of this trip.

CST Registration No. 2028271-20. Fla. Seller of Travel Reg. No. ST-33300 Iowa Seller of Travel No. 520 Ohio Seller of Travel Reg. No. 8889139. Washington State Seller of Travel Reg. No. 601-820-8781. PARTICIPATING AIRLINES-all IATA and ARC Member Carriers ©2013 AHI Travel Printed in the USA.

LAND PROGRAM

October 11-20, 2014

Full Price

\$5,245

Special Savings

\$250

Special Price*

\$4,995*

*Special Price valid if booked by the date found on the address panel.
VAT is an additional \$475 per person.

All prices quoted are in USD, per person, based on double occupancy and do not include air program costs (unless otherwise stated). Single accommodations are an additional \$3,395 (limited availability).

AIR PROGRAM

October 10-20, 2014

AHI Travel's exclusive Air Program provides special advantages for travelers who are flying on our designated group flights. Reserve your air with us to enjoy a number of important services to help ensure a smooth and relaxing journey. We have negotiated special fares and benefits with our airline partners.

AHI AIR BENEFITS

- **Arrival and Departure Transfers** including baggage handling.
- **Price Guarantee** — protect yourself from fare and fuel surcharge increases.
- **Advance Seat Assignments** on most airlines.
- **Group Discount Business Class Prices** on most airlines.
- **Flexibility** — most programs do not require immediate ticketing, avoiding penalties for cancellations or changes until the tickets are issued.
- A dedicated **Passenger Service Representative** — a single point of contact to assist you.
- **Knowledgeable Air Agents** will track your flights and assist with any lost baggage, flight delays or cancellations.



ITINERARY

Day 1	Depart Gateway City [†]
Day 2	Arrive Lyon
Day 3	Lyon
Day 4	Lyon
Day 5	Lyon Tournus
Day 6	Chalon-sur-Saône Fragnes
Day 7	Rully Santenay St. Léger-sur-Dheune
Day 8	Beaune
Day 9	Dijon Côte d'Or
Day 10	Beaune
Day 11	Return to Gateway City [†]

NOTE: This itinerary schedule may change due to local conditions.

[†]Provided for Air Program participants.

| INCLUDED FEATURES |

Accommodations

- **Three nights** in **Lyon, France**, at the first-class **Hôtel Carlton Lyon**.
- **Cruise for three nights** aboard the charming **Caprice**.
- **Three nights** in **Beaune** at the first-class **Hôtel Le Cep**.

Meals

- **Enjoy an extensive meal program**, including nine breakfasts, six lunches and five dinners. Tea or coffee is included with all meals, plus wine with all included dinners as well as included lunches onboard the Caprice. Take advantage of leisure time to try local cuisine independently.
- Sample **authentic regional specialties** at local restaurants.
- Attend a special Welcome Dinner.
- Gather for a Farewell Dinner.

Transportation

- All deluxe motor coach transfers in the Land program itinerary and baggage handling on these transfers are included.

Your Exciting Travel Program

(For full details, please refer to the day-by-day itinerary.)

- **Informative educational programs**, presented by local experts, enhance your insight into the region.
- **All excursions:**
 - Experience historic Lyon, including a walking tour of the city's oldest district.
 - Enhance your culinary skills with a cooking class in the French capital of gastronomy.
 - Glide along the River Saône and the Canal du Centre aboard the intimate Caprice.
 - Stroll through Tournus, Chalon-sur-Saône, Rully and Santenay.
 - In Beaune, admire the historic Hospices de Beaune.
 - Explore Dijon, the capital of the Dukes of Burgundy.
 - Take a scenic drive along the Route des Grands Crus, with stops in Gevrey-Chambertin, the Château du Clos de Vougeot and the Château de Meursault.

Many Included Extras

- Consultation services of a dedicated Passenger Service Representative prior to departure.
- Services of an experienced Travel Director throughout your stay.
- Detailed travel and destination information to assist in your planning.
- Tipping of excursion guides and drivers.
- Complimentary travel wallet.



Presorted Std.
U.S. Postage
Paid
AHI Travel



Top to bottom:

Lyon

Bicycles provided by
Caprice staff

Interior, Hospices de
Beaune

Market, Dijon

Cover photos:

Vineyard, Burgundy
Caprice



A word about your Tour Operator

AHI Travel is the premier operator of deluxe travel programs sponsored by alumni associations. Their experienced, professional staff has offered the highest level of service in **innovative travel programs since 1962.**

In AHI Travel's care, you can rely on:

- **An exceptional travel value.** It would be impossible for an independent traveler to arrange all these unique experiences, inclusions and services at a comparable price.
- **Unique access to local sites.** Take advantage of more than 50 years of travel experience to gain preferred entrance to popular sites and to uncover the region's hidden treasures.
- **Experienced Travel Directors** who attend to every detail of your journey.
- **Expertise of local guides** who possess authoritative knowledge of the region and offer personal insight into local culture.
- **Flexibility and customization.** Free time during the trip allows you to pursue your own interests. They will also help you tailor your dream trip with add-ons and extensions.
- **Safety and security.** In a country where you might not know the language or culture, their professional staff is on hand to ease your way and get you any help you need.



JOHNS HOPKINS
UNIVERSITY

Office of Alumni Relations
San Martin Center, 2nd Floor
3400 North Charles Street
Baltimore, MD 21218

FRABURG14 102

**Please call or refer to our
website for the most current
program information,
discounts and pricing.**



Like us at [facebook.com/ahitravel](https://www.facebook.com/ahitravel)



Follow us on Twitter @ahitravel



View our webinars at [youtube.com/ahitravel](https://www.youtube.com/ahitravel)